

Technical data/accessories



Technical data CU 65

Cooling unit with integrated cooling machine and insulated heat exchanger for the secondary cooling circuit that can be refilled

Temperature control between -2°C and ambient temperature

Integrated display with temperature control in the housing of the CU 65

Storage of the selected temperature

Temperature sensor, electronically

Cooling element with two leakageproof tubings and quick seal connection

Standard insulating tubing, length 40 cm with 2 hose connections

Refill bottle 250 ml (50% ethyleneglycolewater-solution)

Hose extension (optional)

Dimensions: (W x D x H): 403 x 215 x 270 mm

Weight: 13 kg

Accessories + Consumables

Catalog Number	Description
152510	Adapter I for injector blades
152520	Adapter S for sapphire and zirconium blades
152530	Adapter R for razor blades
152550	Adapter CH for special high profile blades
648200	Buffer tray VN
648220	Buffer tray PE polyethylene
647010	Cooling element
715800	Chuck B (Biopsy)
715810	Chuck F (Flat)
715820	Chuck K (Concave)
715830	Chuck PE for buffer tray PE
715840	Chuck FS (flat surface which rises by 10° for buffer tray VN)
715850	Chuck PES (pure Polyethylene which rises by 10° for buffer tray VN)
760160	Large Field Magnifier 220...240V/50...60Hz
760307	KL 200 Cold light source 230V/50...60Hz
705020	Histology light guide 2 arm for KL 200
441090	Fork for the insertion and removal of all chucks in buffer tray VN
419230	Fork for the insertion and removal of all chucks in buffer tray PE
715130	Specimen Clamp for sectioning industrial, botanic or harder materials without buffer tray
715150	Foil clamp for sectioning thin or small industrial, botanic or harder materials
755050	Integrated zoom stereomicroscope
705080	Stereomicroscope on ball bearing boom stand.
152540	Double-edged razor blades, 10 pcs.
152000	Sapphire Blade (used with adapter S)

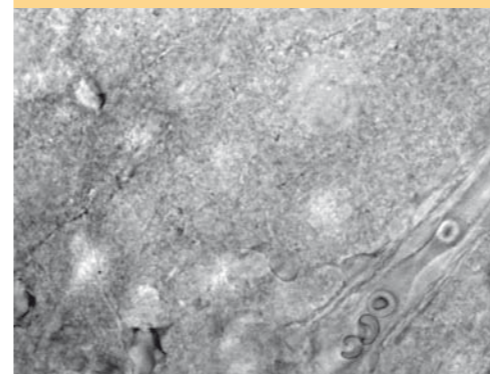
Rev. 11/08

Anatomical Pathology

Manufacturer

Microm International GmbH
Part of Thermo Fisher Scientific
Robert-Bosch-Str. 49
69190 Walldorf/Germany
Phone: +49(0)6227-8360
Fax: +49(0)6227-836111
e-mail: info.dxd.dewal@thermofisher.com
Internet: www.ap-walldorf.com

Thermo Scientific Microm CU 65 Cooling Unit, accessory for HM 650 V



Precise Efficient Ergonomic

Thermo
SCIENTIFIC

Part of Thermo Fisher Scientific

Thermo
SCIENTIFIC

Illuminations, Magnifiers, etc.



Thermo Scientific Microm CU 65 cooling unit for the temperature stabilization of the buffer solution in the buffer tray of the Thermo Scientific Microm HM 650 V.

CU 65 – the efficient supplement for the HM 650 V microtome with vibrating blade for working with a constant temperature.

For optimal preservation and stabilization of tissue, the temperature range is between -2°C and ambient temperature.

Concerning native tissue, better sectioning results can be obtained in neuro, electrophysiological and botanic application areas. A deeper temperature is also of advantage allowing thinner sections in immunohistochemistry and for the fluorescent microscopy.

The precise temperature measurement is controlled via an electronic temperature sensor that is inserted into the cooling plate. The temperature is digitally shown on the display of the cooling unit including also the temperature control.

The black coated cooling plate is placed in the buffer tray of the HM 650 V and allows all handling options (turning, orienting and changing) of the buffer tray. All chucks can be used unrestrictedly.

For the easy cleaning of the cooling plate, just uncouple the two hoses. The leakage proof, fast couplings avoid the draining off of cooling agent.

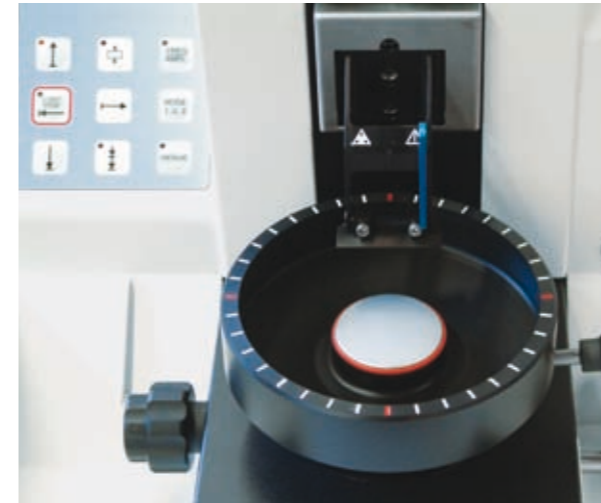
The small size of the CU 65 cooling unit allows the setting-up behind or at the side of the basic instrument HM 650 V. However, with the optional hose extension, the CU 65 cooling unit can also be placed at another site, e.g. even on a shelf.

Buffer trays and chucks

The orienting buffer tray is available in two different versions. Standard buffer tray VN for chucks B (small specimens), F (flat) and K (concave). The buffer tray PE is made of polyethylene for special applications. The optimal temperature of the buffer solution is kept constant via a cooling element.

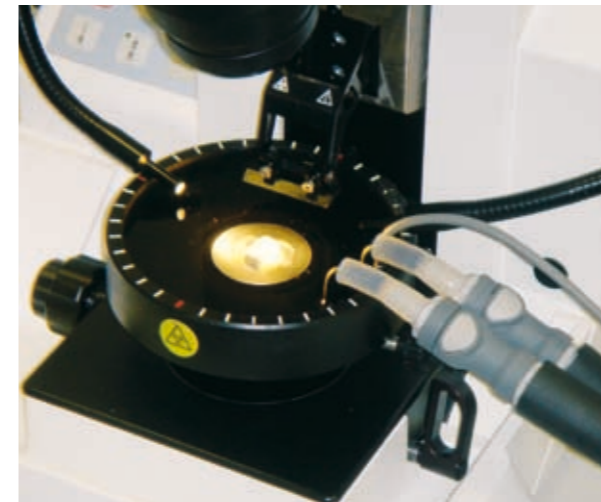
Knife carrier

Different blades and knives can be inserted by changing one part of the blade carrier only, e.g. sapphire knife, injector blades or razor blades.



Special specimen clamping

Most different materials can be clamped in the specimen clamp by using screws. Different tissue from botany as well as industrial material can be sectioned this way.



Histology light guide for cold light source KL 200

– can be adjusted in 3 steps. Combination of two-arm Swanneck light guide and flexible light guide, for oblique illumination and exact illumination of the buffer tray. 3,5 mm fiber bundle, Swanneck light guide 500 mm long. Flexible light guide 750 mm long. Very high light intensity. Incl. adapter for fastening onto the housing of the HM 650 V.

Large field magnifier

– for precise orientation and exact approach of the blades towards the specimen as well as safe, accurate sectioning of the specimen. Magnification 2,5x. Magnifier can be swivelled and moved for optimal viewing angle with adapter and illumination device.

Zeiss Stemi 2000, zoom stereo-microscope

– according to Greenough with high performance optics for 3-D imaging in compact, ergonomic design, for the adaptation on the HM 650 V. Eyepiece 10x., incl. supplementary lens 0.63x Zoom magnifying range: 4.1x – 31.5x Including microscope adapter for angled view on specimen. With horizontal and vertical drive and swivel mechanism.

Stereomicroscope on ball bearing boom stand

– For vertical view on sectioning surface, inclined view of the blade carrier, positioning over the entire buffer tray. Can also be used for the exact preparation beside the HM 650 V.

External zoom stereomicroscope according to Greenough with high performance optics for 3-D imaging to be used with the HM 650 V. Binocular tube 35° with WF eyepieces 10x / 23 mm and supplementary lens 0,75x. Zoom magnifying range: 5.7x – 37.5x. Working area 130 mm. Including ball bearing boom stand with heavy base. Pillar 645 mm height. Vertical parallel carrier with ball bearing guidance that can be locked, swivelled to the side, height and incline adjusted, for the insertion for focusing operation.

